

Sage 100 NA

Sage 100cloud,
Roadmap, Version
2022/2021 Recap

John Woodward

10/11/2022

Sage

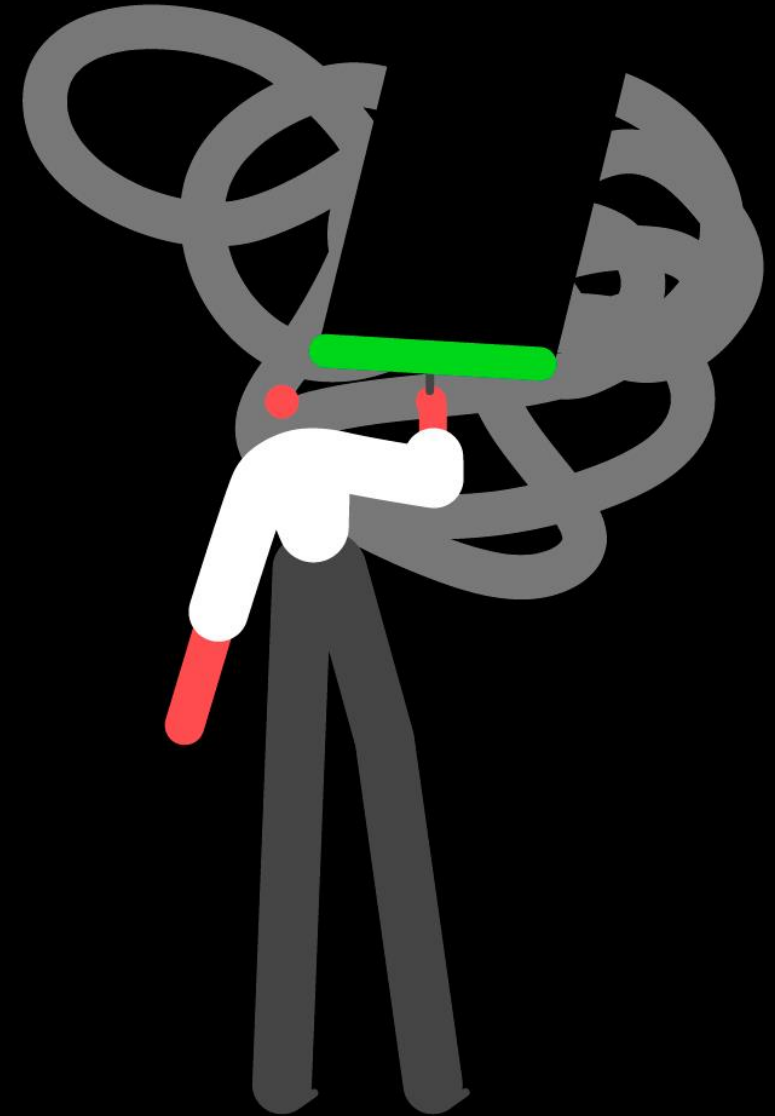


Sage Safe Harbor

Statements regarding our product development initiatives, including new products and future product upgrades, updates or enhancements represent our current intentions, but may be modified, delayed or abandoned without prior notice and there is no assurance that such offering, upgrades, updates or functionality will become available unless and until they have been made generally available to our customers.

Sage 100 Customer Focused

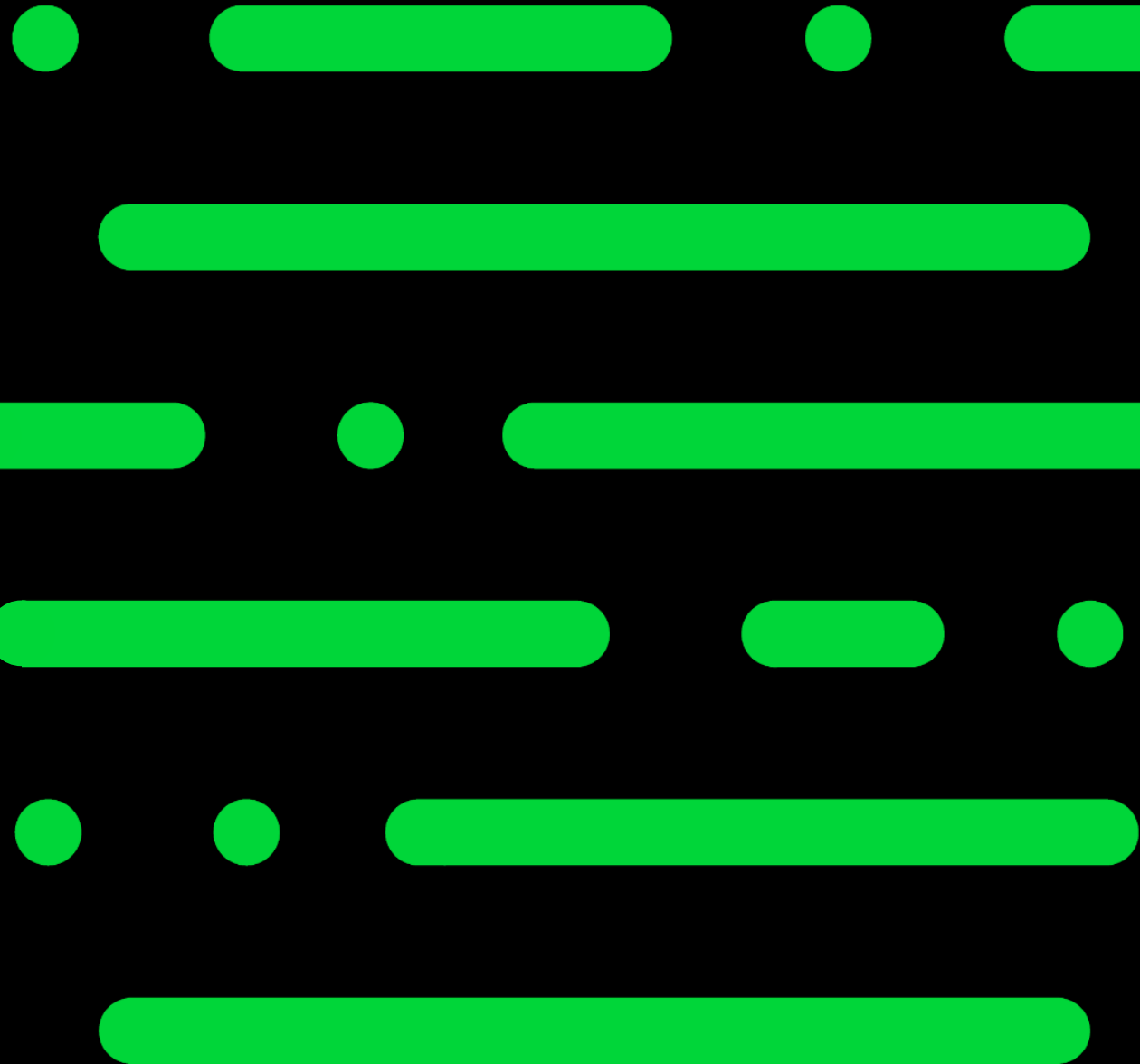
Assisting customers by listening to their needs and addressing those needs through innovation.



2021 Review

2021.x

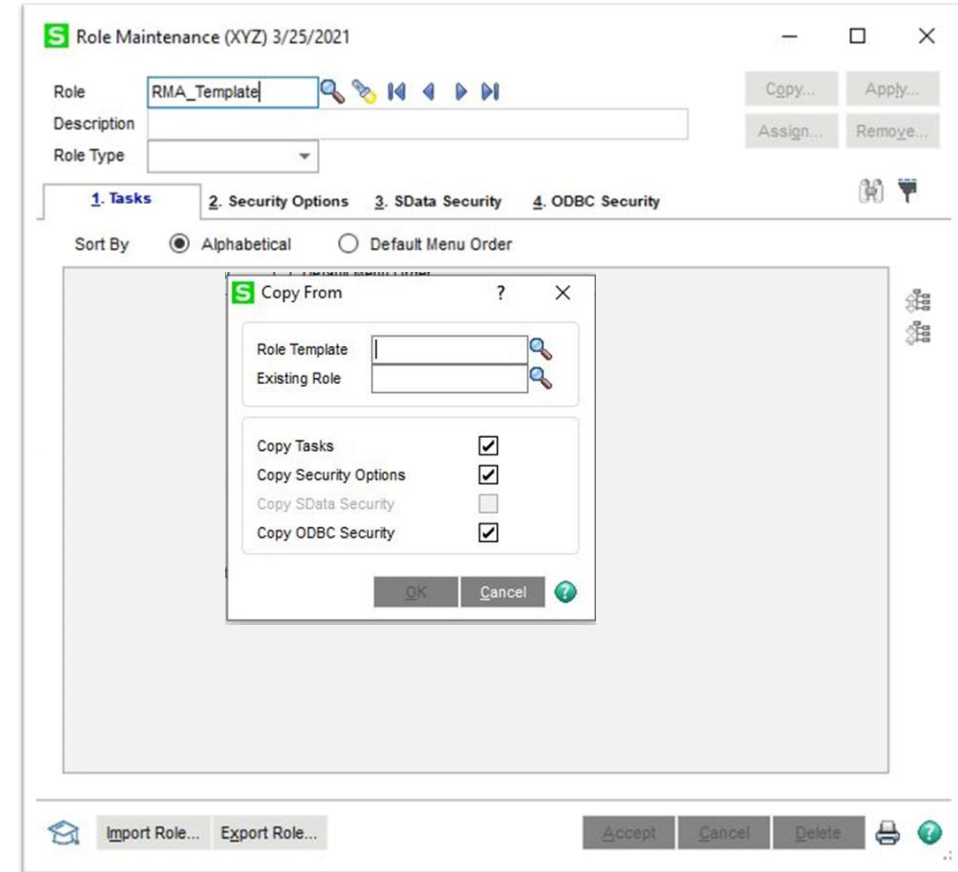
Sage



Sage 100 2021.0

Enhanced Security and Communications

- Role Templates
- 36 new pre-defined Role Templates
- Copy function to copy from Role Template or Existing Role
- Copies in pre-defined tasks and security options based on selection
- Quickly assign users to roles
- New Role/User Inquiry



Sage 100 2021.0

Additional

- Display Company Types in Company Code Lookup
- Expanded PO Receipt of Invoice History Details
- 1099-NEC Form in Purchase Order
- Select which User Identifier to display – Logon, Name, User Code (default), or Email-Address
- Paperless Office enhancements
- Copy Forms and Reports in Company Maintenance
- Check Number Expansion allows 10-digit check numbers in AP, PO, BR, GL, CI and PR
- 64-Bit Version of Sage 100 (optional)

Sage 100 2021.1 - 2021.5

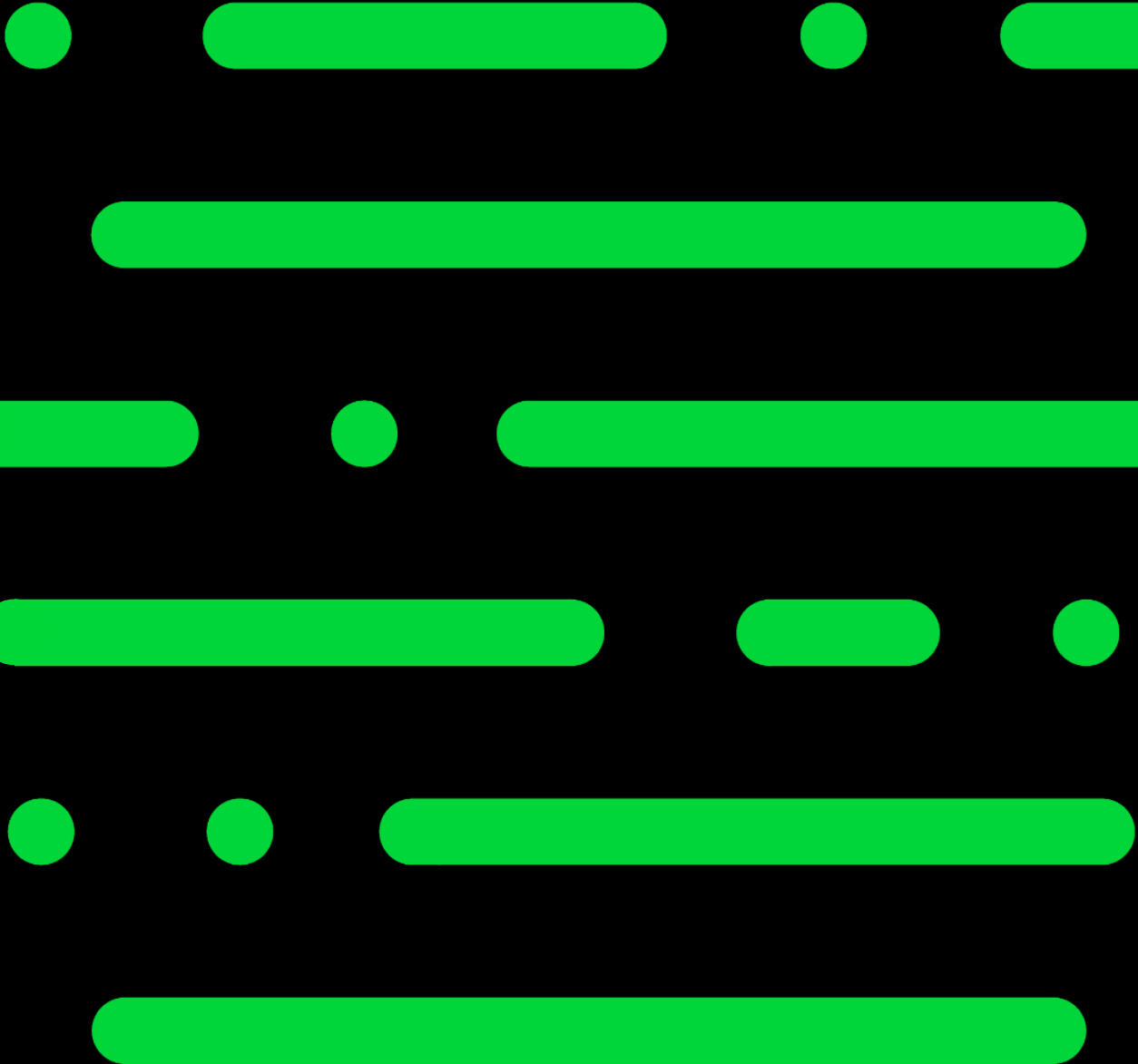
Additional

- DBA Name and Address for 1099 Forms in Accounts Payable (2021.2)
- Updates for 1099 Form Tax Reporting (2021.2)
- ODBC Password Support (2021.2)
- Print Zero Balance Customers with No Invoices checkbox added in Accounts Receivable Statement Printing (2021.5)
- Product updates 2021.3 and 2021.4 only contained program fixes for Sage 100.

Current Release

2022.x

Sage



Sage Production Management (PM) to framework standard

- Data dictionary fully compliant with standards including VI and Custom Office
- New conversion utility with upgrade paths from legacy PM and WO, includes WO history
- Standardized workflow and UI
- Additional reports and forms
- Improved payroll integration
- Expanded memo and user defined field usage
- Updated and revised Security settings

Sage Production Management to framework standard

- Work Order (WO) not on the 2022.0 installer
- Material Requirements Planning (MRP) not compatible with PM, IRP not compatible with PM 2.0 yet
- If upgrading a customer that uses WO/MRP
 - Wait until 2022.1 when IRP will be compatible
 - Upgrade to 2021
 - Contact support for authorization to install WO with 2022.0

Sage 100 2022.0

Product release enhancements April 2022

Usability enhancements

- Dynamic homepage (Information Center)
- Display Inactive Items in ALE lookups
- Display all Sales Order Types in Item Maintenance
- Add Order Types and Ship / Expire Dates to Sales Order and Quote History Inquiry
- Search for Quotes in Customer Maintenance
- Save Date selected with Reports Settings
- Windows Task Schedule to Install Updates
- Visual Process Flows Editor Updated
- Public Favorites
- Inventory Image File Types Expanded to include *.jpeg, *.png, and *.tiff
- History Options default set to five years
- Sage Intelligence updated to 64 – bit compatibility
- Features previously limited subscription unlocked
 - Document Date Warnings
 - Spell Check
 - ALE Full Text Search
 - Theme Maintenance

2022.1
June 2022

Inventory Requirements Planning (IRP) 1.0 PM Compatibility

- Support upgrades to PM/IRP from WO/MRP
- Projected Demand included

Deploy 2022.1 in Sage Provisioning Portal (August)

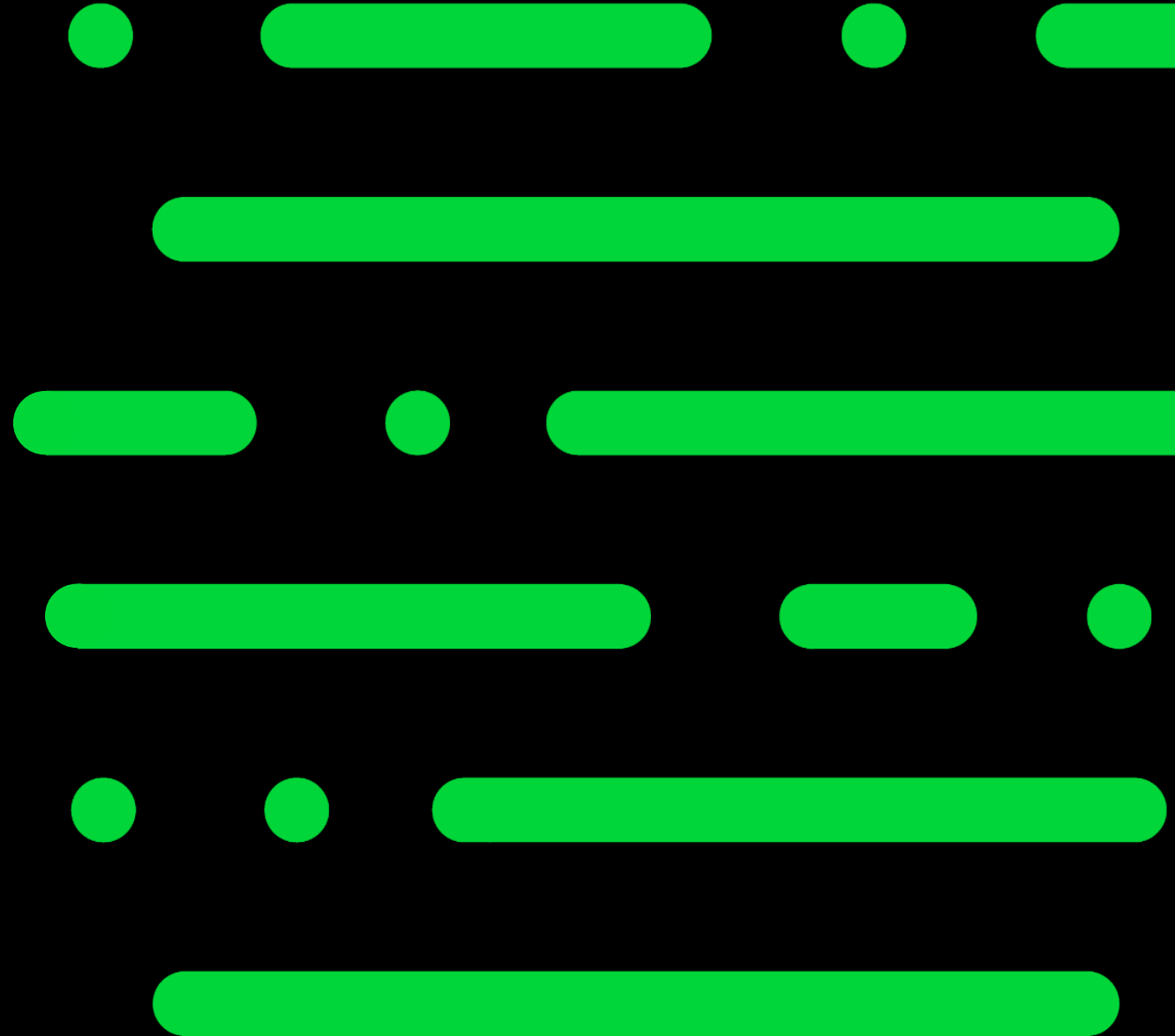
- Available versions in SPP will be 2022.1 and 2021.1
- SPP and SHP program requirement: customers on 2020.0 or newer
- Migration Utility improvements (SPP Replicate Site)

Fix support of OAuth for Exchange Online

Next Release – Sneak Peek

A sneak peek at some features planned
for 2023.x

Sage



**2023.0
Spring 2023**

Enhancement appears in:

- Bill of Materials
- Inventory Management
- Purchase Order
- Production Management
- Return Merchandise Authorization
- Sales Order

Select Serial Numbers by Range

The Select Serial Numbers by Range button is back in the Lot/Serial Distribution to assist you in quickly and easily assigning a group of references without scrolling through a list to find the starting and ending numbers.

S Lot/Serial Number Distribution

Item Code BOARD-004230-33 80486DX4 MOTHERBOARD 100MHZ

Unit of Measure EACH

	Serial Number	Available	Distribute
1		.00	.00

Distribution Balance 5.00

OK Cancel ?

Production Management Scheduling

2023.0
Spring 2023

Enhancements to:

- Options – new Scheduling tab
- Activity Code Maintenance
- Work Ticket Template Maintenance
- Work Center Maintenance

Work Center Maintenance (PMZ) 9/23/2022

Work Center: ACC

Description: ACCESSORIES

Queue Time (Hours): 0

Efficiency Percent: 100%

Number of Workers or Machines: 1

Minimum Scheduling Time Period (Minutes): 0

Available Hours

Sunday	Monday	Tuesday	Wednesday	Thursday	Friday	Saturday
0	8	8	8	8	8	0

Closures

	Start Date	End Date	Description	Close
1				<input type="checkbox"/>

Accept Cancel Delete

New Work Center Maintenance Features

Use these new fields to set the working parameters for each work center:

1. Queue Time (in hours)
2. Efficiency Percent
3. Number of Workers or Machines (i.e. capacity)
4. Minimum Scheduling Time Period
5. Available hours – set the number of hours a work center is available for operation each day of the week
6. Closures (for the specific work center) Use the new Scheduling tab in Options to set system-wide Closures

Look Ahead

2023

2024

Technical Maintenance & Security

- Crystal Reports 2020 Update
- Branding updates
- Sage ID (Multi-factor Authentication)
- Security Updates
- Replace ChilKat for Paperless Office

Regulatory Compliance

- US Payroll tax rate updates
- Payroll tax engine updates

Cloud & Cloud Connectivity

- Sage Partner Cloud:
 - Launch Sage 100 2023.1 in SPP
 - Allow SQL in SPP deployment
- Partner tool for VM upgrade-in-place

Customer Experience

- Manufacturing Modernization (cont.)
 - IRP improvements
 - Scheduling for Production Management
 - PM feature improvements
- Select usability improvements – Customer requests, NPS, call drivers
- Streamlined upgrade tool
- User-selected DB options (SQL/non-SQL)

- Employees as common component (support timecard without payroll)
- Ongoing technical Maintenance of Line

- US Payroll tax rate updates
- Payroll tax engine updates

- Sage Partner Cloud
 - Launch Sage 100 2024.1 in SPP
- Integration with Sage purchasing/AP digital network

- Additional PM & IRP improvements – parity + with Work Order and MRP
- CRM integration streamlining – setup, functionality, stability
- Enhanced federated search
- Select usability improvements – Customer requests, NPS, call drivers
- Sage Data Networking for Purchases

Questions

