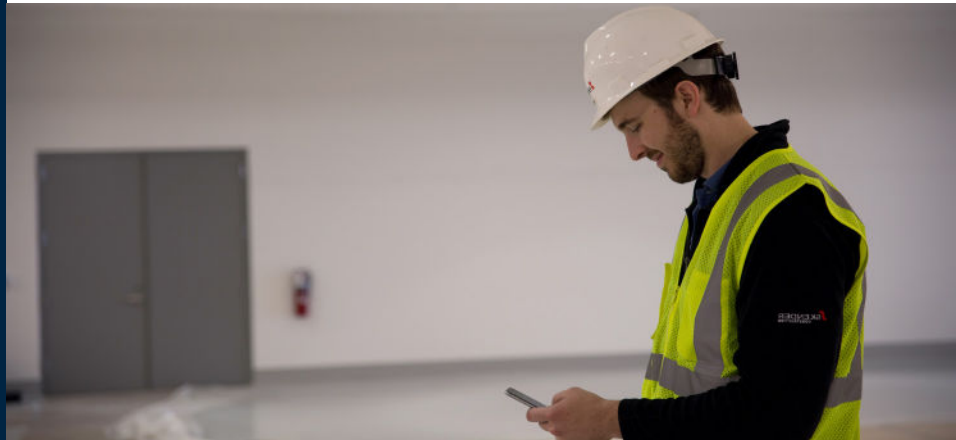


DATA SHEET

# Sage Production Management

*Powered by Scanco*

With growth comes complexity. As manufacturers increase capacity, grow their workforce, and expand into new areas of opportunity they also lose visibility into their production processes. Data silos restrict access to strategic information while eroding trust. The proliferation of unintegrated management tools and spreadsheets creates bottlenecks. An incomplete picture of inventory and demand makes accurate forecasting next to impossible. The result is missed opportunity, decreased efficiency, and increased costs.

**Sage Production Management** gives discrete make to stock manufacturers and fabricators the tools they need to achieve visibility into their entire production process. By centralizing the production process in a way that is tightly integrated with Sage 100cloud, assemblers, manufacturers, and fabricators always know their costs, the status of items, and the material quantities required to meet demand.

## Accuracy

---

With Sage Production Management, businesses can track costs beyond a simple bill of materials. Support for tracking labor and other job-related attributes (like overhead, direct AP costs, and status) means that manufacturers can get a complete picture of what it costs to produce an item. Because they always have current and accurate cost reporting, manufacturers can track costs relative to budget in real time and make adjustments to inventory, materials, and production processes with increased agility.

## Benefits

---

- Achieve visibility into the entire manufacturing process
- Increase agility by tracking costs in real time
- Identify and remove production bottlenecks
- Promote customer satisfaction through accurate status updates
- Optimize inventory to reduce excess inventory and eliminate stock outs
- Customize fields, tables, and scripts to meet the unique needs of your growing business

## Visibility

---

It is important for manufacturers to know where their items are in the manufacturing process. But it is as important for manufacturing customers to know how their orders are progressing. Thanks to real time access to the status of every item, manufacturers can improve customer satisfaction by setting accurate delivery expectations. By adding Make to Order and Enhanced Scheduling, businesses can benefit even more through the ability to identify bottlenecks and optimize capacity planning

## Optimization

---

Without Sage Production Management, complex inventory management may involve exporting sales order data, manipulating that data in spreadsheets, and manually creating purchase orders to ensure that materials are at levels necessary to meet production demand. Sage Production Management combines sales order data already available in Sage 100cloud with manufacturing process data to alert users when ordering is needed. The real time integrated inventory control system with built-in controls also increases data integrity by minimizing errors.

Built on the Sage 100cloud Business Object Framework, Sage Production Management benefits from many additional capabilities, including dual grids and batch processes to increase data entry efficiency, the ability to easily customize fields, tables, and scripts in ways that persist with product upgrades, and the use of Visual Integrator to automate imports from almost any third-party system. Extend your Sage Production Management environment with support for Make to Order manufacturing, Enhanced Scheduling, and guided product configuration (coming soon).

Eliminate barriers to growth with an integrated manufacturing solution. Improve accuracy, maintain visibility, and optimize your inventory with Sage Production Management and Sage 100cloud.

## Extensions

---

**Material Requirements Planning** With the Material Requirements Planning extension for Sage Production Management businesses can more accurately evaluate supply and demand and avoid costly production delays by optimizing their inventory and simplifying scheduling.

*Available July 2019 \**

**Make to Order** With the Make to Order extension for Sage Production Management, businesses can enhance their current make to stock functionality with features designed to customize and fabricate items according to unique customer specifications.

*Available September 2019 \**

**Enhanced Scheduling** With Enhanced Scheduling, you can establish job priority and eliminate bottlenecks. By centralizing scheduling within Sage 100cloud, you can not only improve efficiency and coordination thanks to a user-friendly drag and drop interface, but also optimize the management of material availability, create exception alerts, and improve forecast accuracy. (Requires Make to Order Extension)

*Available 2020 \**

**Product Configurator** The Product Configurator extension provides helpful guidance through questions designed to simplify the configuration of individual customer orders. It is rules-based so it only presents product options that are compatible with options already selected. (Requires Make to Order Extension)

*Available 2020 \**

\* Release dates and features subject to change

For more info, visit: [www.sage.com/en-us/products/sage-100](http://www.sage.com/en-us/products/sage-100)

