



*Connect. Integrate. Accelerate.*

A world map is overlaid on a night city skyline, likely New York City. The map is light blue with glowing cyan dots at various global locations, connected by curved cyan lines representing a network. The city skyline is visible in the background, with lights reflecting on the water.

# FORGING A DIGITAL FUTURE

*Partnering with TrueCommerce*



# TRUECOMMERCE BY THE NUMBERS



**~\$100M**  
2018 revenue



**540**  
employees



**11,000+**  
customers



**130,000**  
trade relationships



**700M**  
transactions 2017



**24,000**  
trading partners

## NORTH AMERICA

340 employees  
Offices in Pittsburgh,  
Reston, Columbus,  
Boston, Cincinnati  
Colorado Springs,  
New Canaan & Carlsbad

## UK and IRELAND

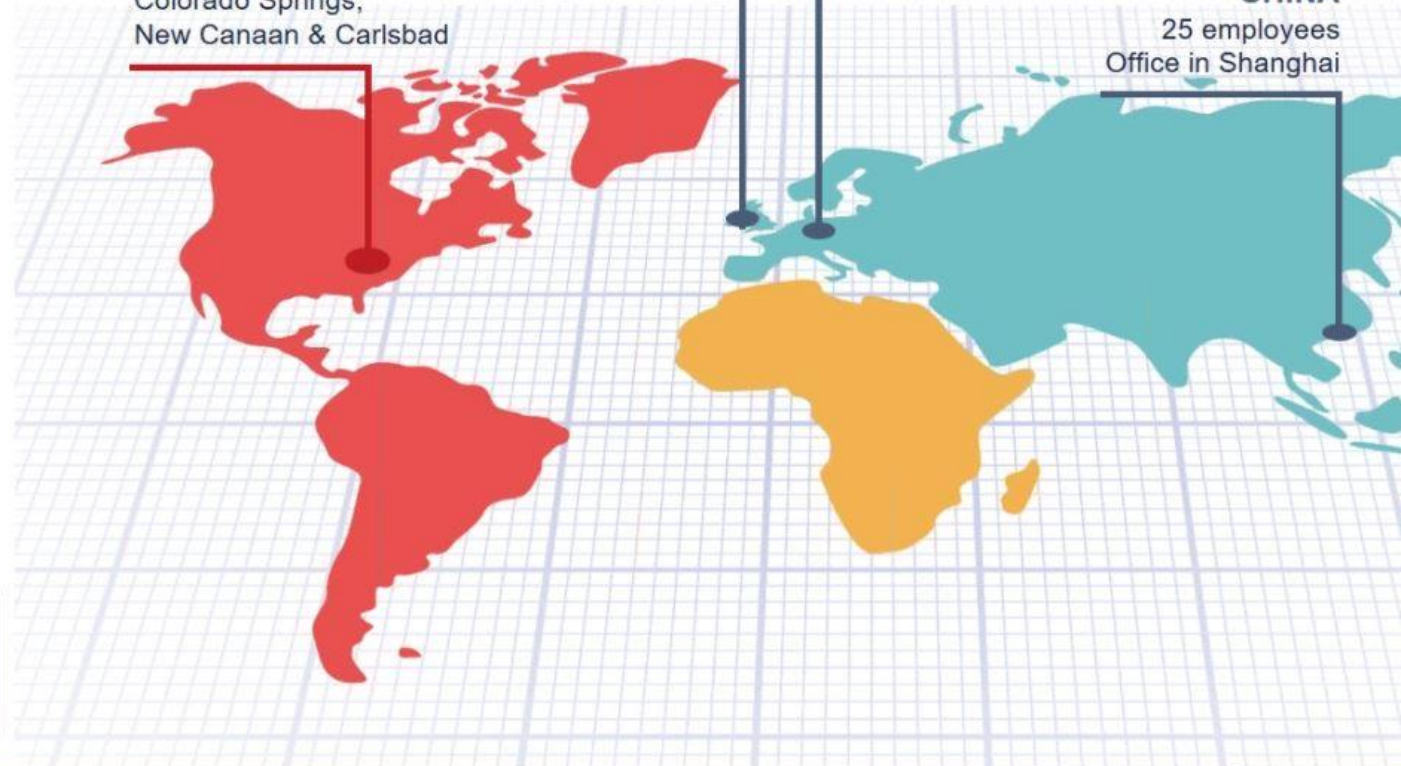
115 employees  
Offices in Coventry,  
Manchester & Dublin

## EUROPE

64 employees  
Offices in Copenhagen &  
Brussels

## CHINA

25 employees  
Office in Shanghai



TOP  
WORK  
PLACES  
2017

Pittsburgh Post-Gazette®

**Inc.**  
**5000**

INBOUND  
LOGISTICS  
**TOP 100**  
LOGISTICS IT PROVIDER 2016

Forbes | 2015  
**AMERICA'S MOST  
PROMISING  
COMPANIES**



# TRUECOMMERCE

Known for:

1. The Sage endorsed partner for EDI

What is EDI.... Computer to Computer transfer of data in a standard EDI format.

1. Anyone doing business with retailers, grocers, Amazon, marketplaces, 3PL's ...
2. Being asked to do EDI
3. On-line fulfillment
4. Currently doing EDI – better / less expensive solution



```
834_09.edi - Notepad
File Edit Format View Help
ISA*00*          *00*          *01*9012345720000 *01*9088877320000
*021007*1210*U*00200*000000088*0*T*~GS*BE*901234572000*908887732000*20021007*16
15*88*T*004010X095A1~ST*834*12345~BGN*00*12456*20021007*1200****2~REF*38*11111~D
TP*007*D8*20030101~N1*P5*SPONSOR*FI*123456654~N1*IN*PAYER*FI*654456654~N1*TV*BRO
KER*FI*234456654~ACT*365*****4456654~INS*Y*18*021*20*A*A*3*AO*N*Y*D8*20030602~RE
F*OF*11111~REF*1L*21111~REF*23*30001~REF*QQ*12~DTP*356*D8*20030101~DTP*357*D8*20
030401~DTP*336*D8*20030401~NM1*IL*1*GONZALES*FRANK*A***34*123456789~N3*68400RO*S
UITE 225~N4*SAN JOSE*CA*93922**CY*SANTA
CLARA~PER*IP**WP*7637972981*HP*111111111~DMG*D8*19750101*M*M*C*1~ICM*1*425.25*4
0*IT*FI~AMT*D2*100~AMT*P3*20~AMT*C1*50~AMT*B9*40~HLH*X*74*60*210~LUI*LD*123**8~N
M1*31*1~N3*MAILING ADDRESS*SUITE 225~N4*SAN JOSE*CA*93922**CY*SANTA
CLARA~NM1*ES*2*EMP
LAST*FIRST*MI**SUFFIX*ZZ*1234~PER*EP**HP*9021234567*WP*9021234569~N3*6840 VIA
DEL ORO*SUITE 225~N4*SAN JOSE*CA*93922**CY*SANTA
CLARA~NM1*M8*2*SCHOOL~PER*EP**TE*9021234567*FX*9021234569~N3*6840 VIA DEL
ORO*SUITE 225~N4*SAN JOSE*CA*93922**CY*SANTA CLARA~NM1*S3*1*CUST PARENT
LAST*FIRST*MI**SUFFIX*ZZ*1234~PER*PQ**HP*6021234567*WP*9021234569~N3*CUS PARENT
ADDRESS1~N4*SAN JOSE*CA*93922**CY*SANTA CLARA~NM1*E1*1*RESPONSIBLE PARTY
LAST*FIRST*MI***34*123458569~PER*RP**TE*6021234567*FX*6021234569~N3*RESP
ADDRESS*SUITE 225~N4*SAN JOSE*CA*93922**CY*SANTA
CLARA~DSB*1*****DX*585~DTP*360*D8*20030210~DTP*361*D8*20030410~HD*021**HLT*PLAN
A BCD*FAM~HD*021**PDG*PLAN A
BCD*ESP~DTP*348*D8*20030510~DTP*349*D8*20030610~AMT*C1*20~REF*1L*123456~IDC*PLAN
COVERAGE*H*1*1~LX*1~NM1*P3*1*JOHNSON*BARBARA****FI*542555555*25~N4*SAN
JOSE*CA*93922**CY*SANTA
CLARA~PER*IC**TE*5021124564~PLA*2*1P*20030212**22~COB*P*33456*1~REF*6P*11232~N1*
IN*OTHER INSURER
NAME*FI*33456~DTP*344*D8*20030101~DTP*345*D8*20030401~SE*19*12345~GE*1*88~IEA*1*
00000008~
```



# EXTENSIVE TRADING PARTNER LIBRARY

## Grocers



## Retailers



## 3PL



## Pharma





# HOW BUSINESSES HAVE CHANGED

## PAST

Single warehouse

2 – 3 weeks  
fulfill orders

Orders – Fax,  
Phone & email

Shipped to store /  
distribution center

Tracking – through  
customer service  
rep (8 AM– 5PM)



## PRESENT

Multiple warehouses /  
fulfillment centers

2 – 3 hours to  
fulfill orders

Shipped to stores,  
DC's, businesses &  
end users

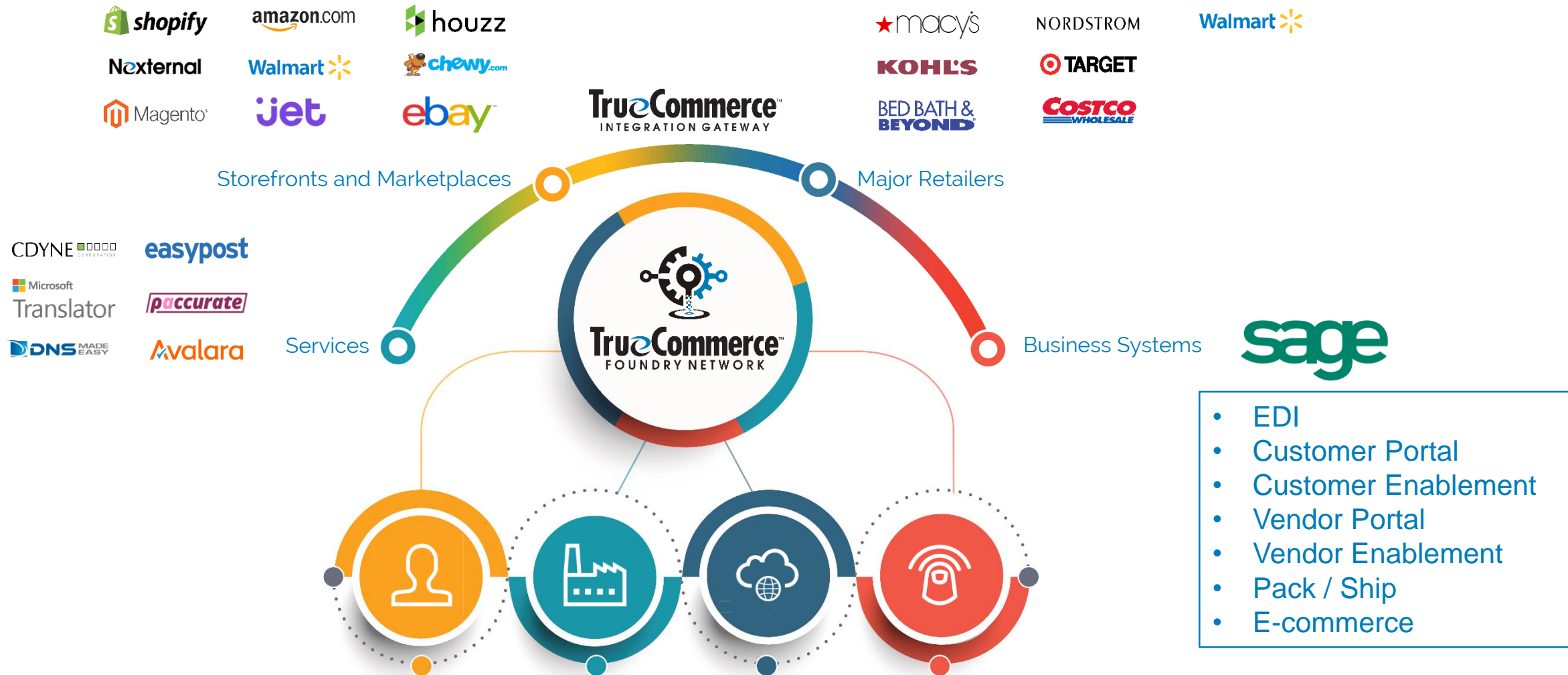
1 item X 1 box or  
1000 items X 100 boxes

Orders – EDI,  
Shopping Cart,  
Portals, Amazon,  
Phone, FAX,  
e-mail...

Tracking – 24/7  
through website



# TO CONNECT TO A BROAD ECOSYSTEM...





# RICH NETWORK SERVICES & APPLICATIONS



TRADING



COLLABORATION



COMMERCE



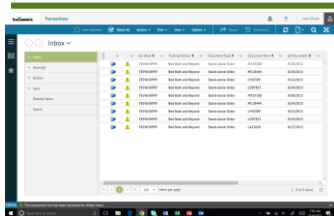
PLANNING



FULFILLMENT



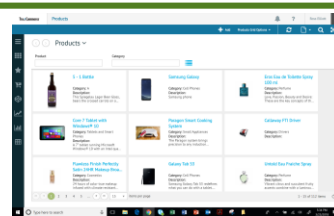
VISIBILITY



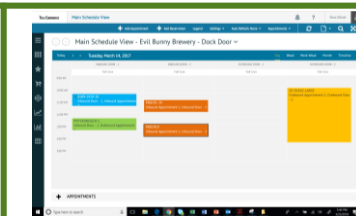
Trading Community  
Buyers  
Sellers  
Translation Service  
Product Information  
Inventory / Replenishment  
Compliance  
Analytics / Reporting



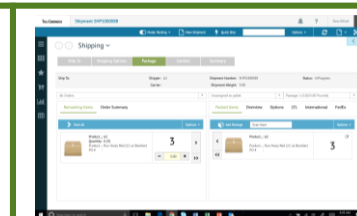
Procure to Pay  
Supplier Portal  
Customer Portal  
eInvoicing  
DropShip  
Replenishment  
Fulfillment  
Compliance  
Analytics / Reporting



Storefronts  
Mobile POS  
Product Information  
Order Management  
DropShip  
Fulfillment  
Orchestration  
Channel Integration  
Analytics / Reporting



VMI  
Resource Scheduling  
Transportation  
Channel Marketing  
Orchestration  
Analytics / Reporting



Allocation  
Cartonization  
Packing  
Multi-carrier  
Quality / Inspection  
Image Capture  
Analytics / Reporting



Shipments  
Inventory  
Order  
Purchases  
DropShip  
Returns  
Alexa Integration  
Analytics / Reporting



# AMAZON

**amazon**  
seller central

**amazon<sup>®</sup>**  
vendor central

Seller Fulfilled  
**amazon<sup>^</sup>Prime**



fulfillment  
by **amazon**



# TRUECOMMERCE AND SAGE

sage 50

Sage 300

sage X3

sage 100

sage 500

And other ERP's as well (NetSuite, Acumatica, Microsoft, SAP ...)





*Connect. Integrate. Accelerate.*

**PACK & SHIP**





# TRUECOMMERCE PACK & SHIP

Consolidate multiple disparate applications into one powerful web-based application simplifying outbound fulfillment and trading partner compliance

Optimize packing process

Multi Carrier Rating & Shipping

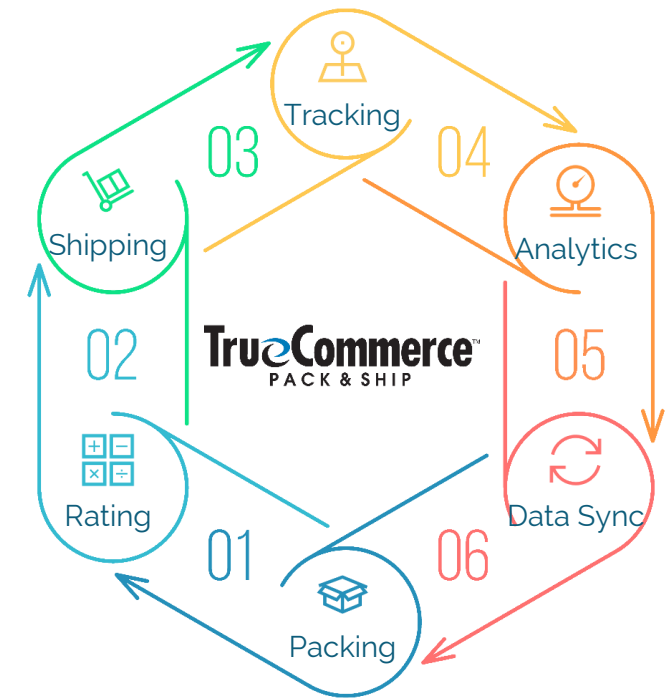
Automate carrier and customer compliance

Track packages through delivery

Analyze spend, throughput, and performance

Automate ASN and ship notifications

Integrate with broad set of business systems, storefronts, and order management systems.





# TRUECOMMERCE FOUNDRY

Built on a robust technology platform

- **Natively multi-tenant**
- **Highly scalable and resilient**
- **Foundation for the Foundry Network/EDI**

Deep integration capabilities

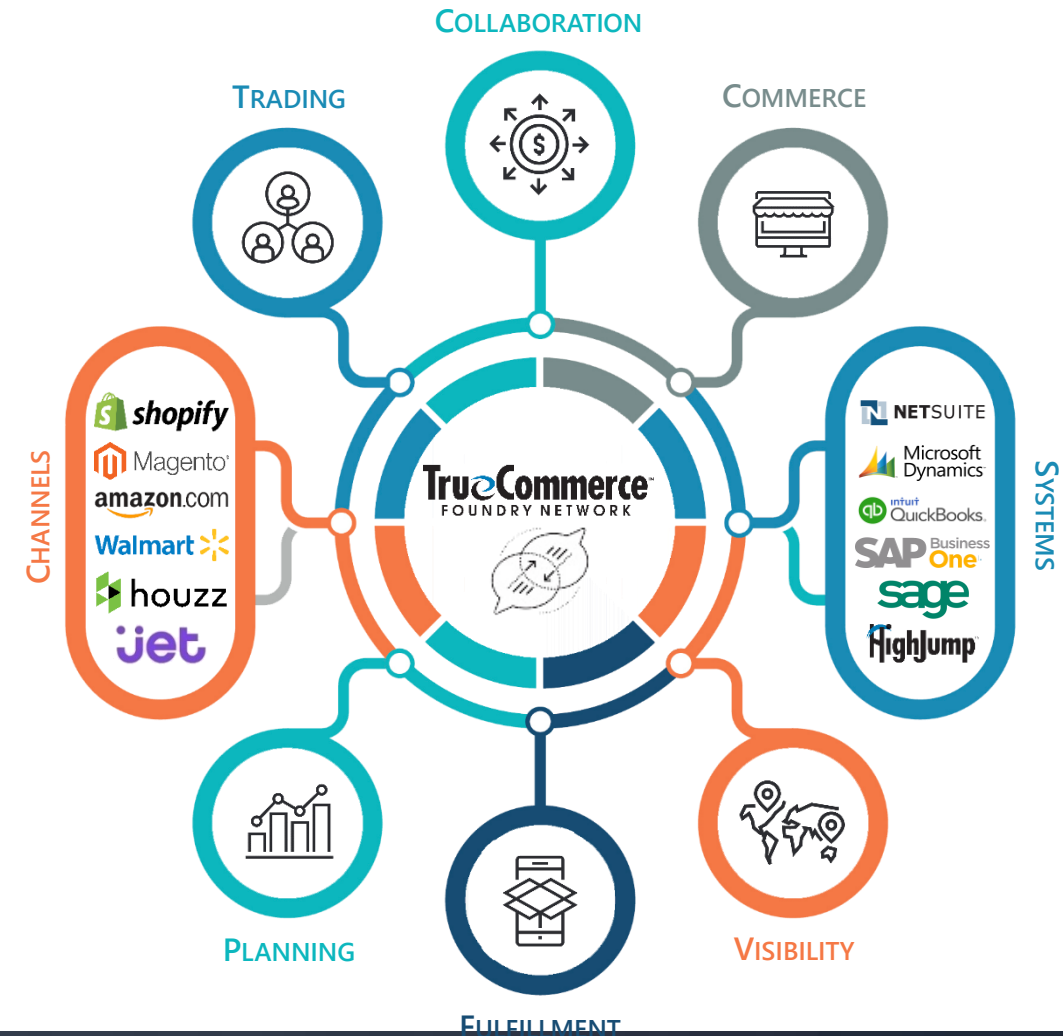
- **Across business systems, logistics systems, marketplaces and storefronts**

Broad set of unified commerce services

- **Addressing connected customers, suppliers and channels**

Innovative supply chain services

- **Available stand alone or integrated**





# OPTIMIZED PACKING

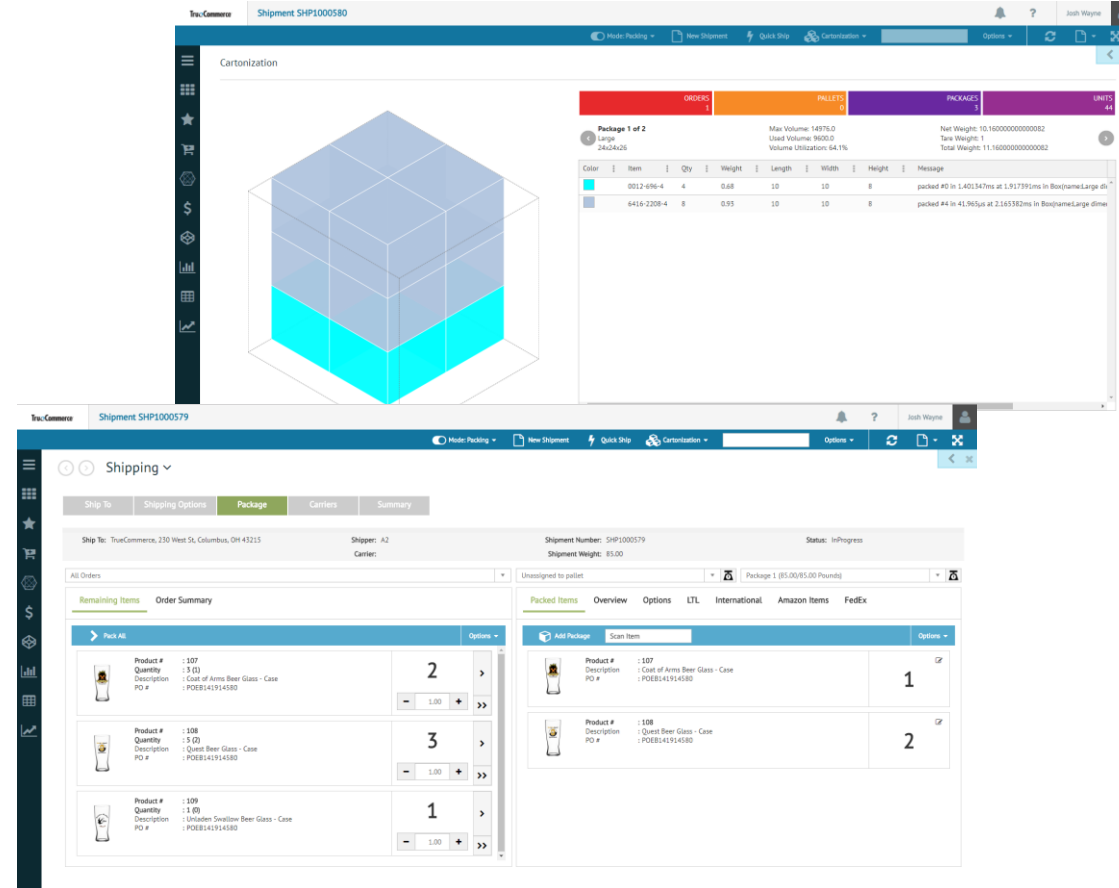
Guided Packing

Cartonization Algorithms

Pack verification reduces costly shipping errors

Capture Package Contents

Increased Product Tracking





# MULTI CARRIER SHIPPING

More than 60 carriers available

- ✓ Global origin support
- ✓ Extensive listing of parcel carriers
- ✓ Same-day services

Reduce Freight Spend with Rate Comparisons

- ✓ Dynamic rate shopping selects “best way” (select most economic option to achieve SLA)
- ✓ Reduce shipping costs
- ✓ Improve Delivery Speed

Support for international exports

FedEx®

Compatible Solutions  
Program

UPS Ready



YODEL





# MEET COMPLIANCE DEMANDS

## Improve Customer Satisfaction and Vendor Scorecard Performance

- ✓ GS1 labels & branded pack slips printed immediately after packing shipment
- ✓ ASN's automatically created based on how order was physically packed
- ✓ Integrated compliance reduces reliance on "tribal knowledge" to consistently manage unique order profiles and minimizes chargebacks
- ✓ Pack & address verification ensures the right product is shipped with the right quantity to the right location at the right time



## Increase Perfect Order Performance

- ✓ Pack and address verification ensures orders are packed and delivered accurately
- ✓ Integrated compliance engine automatically generates GS1 labels, retailer branded packing lists and return labels
- ✓ Creates certified carrier labels and VICS Bill of Lading Reports
- ✓ Automatically generates Advance Ship Notices for required customers

### – Powerful Shipping Rules Engine

- ✓ Pre-define shipping rules to ensure orders are processed correctly each time
- ✓ Specify shipping rules like customer and address level account numbers, carrier presets, reference fields, compliance labels, packing methods and much more



# REPORT - TRACK - ANALYZE

## Shipment Reports & Package Labels

- ✓ Fully configurable
- ✓ Packing Lists, Commercial Invoice
- ✓ Carrier Shipping Labels, GS1 ASN Labels, Package Placards

## Shipment Notification Emails

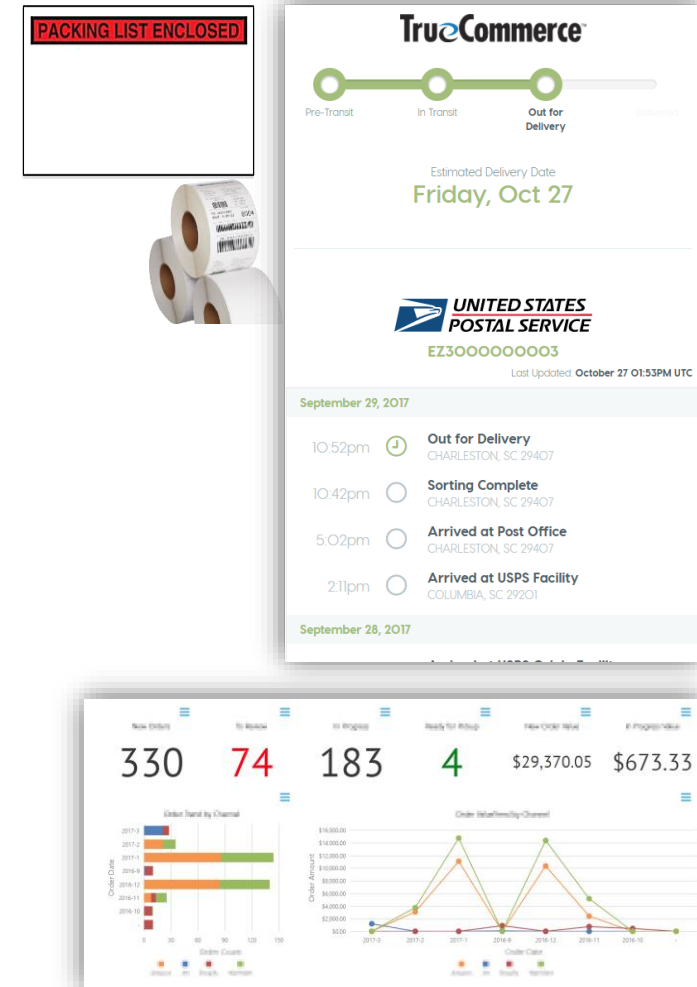
- ✓ Alert recipient to expect their package

## Package Tracking and Proof of Delivery

- ✓ Bread-crum trail of delivery progress through receipt

## Analytics for carrier spend and shipment trends

- ✓ Prepackaged content available to deliver insights to your shipping operation





# BROAD INTEGRATION ABILITIES

Integrated with leading accounting packages, ERP and storefront systems

- Turnkey integration eliminates middleware, API interfacing and specialized integration resources
- Synchs orders from your business system with Pack & Ship eliminating rekeying or data latency issues
  - ✓ Pull orders from the ERP based on specific data points like Customer, Ship Date, Ship to Location
  - ✓ Normalize unit of measures to preferred fulfillment position (units, cases, packs, pallets, etc.)
  - ✓ Ship full kits or exploded as components
- Updates order with shipment status, tracking information and automates order fulfillment step in business system
  - ✓ Automatically create the invoice or shipment
  - ✓ Fulfill against the sales order based on what was shipped
  - ✓ Support for partial and consolidated shipments
  - ✓ Syncs lot and serial data collected during order fulfillment





# SUMMARY



## When you need TrueCommerce:

- Any business dealing with retailers, grocers, big box stores
- Distributor or MFG
- Marketplaces / e-commerce (Shopify, Amazon, Wal-Mart, website)
- Pack and Ship (e-commerce, Marketplaces, Fulfillment)
- Vendors & Supplier Enablement (EDI or Portal)
- Larger customers - (VMI)



# INFORMATION ON TRUECOMMERCE

## TrueCommerce Website

- All supported Sage ERP's (Solutions)
- All datasheets for all supported ERP's (Resources)
- Success stories (Resources)
- Training Videos

**TrueCommerce™**

USA/Can: +1.888.430.4489  
UK: +44 (0)845.643.6600  
DK +45.4582.1600

[Customer Login](#) | [Contact Us](#) | [Careers](#) | [Choose Another Region](#)

Search

United States 



HOW WE HELP

SOLUTIONS

CUSTOMERS

RESOURCES

PARTNERS

Contact



# THANK YOU!

Jeff Franklin, Channel Sales Manager, TrueCommerce  
(724) 940 – 5520 x 3207

[jeffrey.franklin@TrueCommerce.com](mailto:jeffrey.franklin@TrueCommerce.com)



# ANY QUESTIONS?

