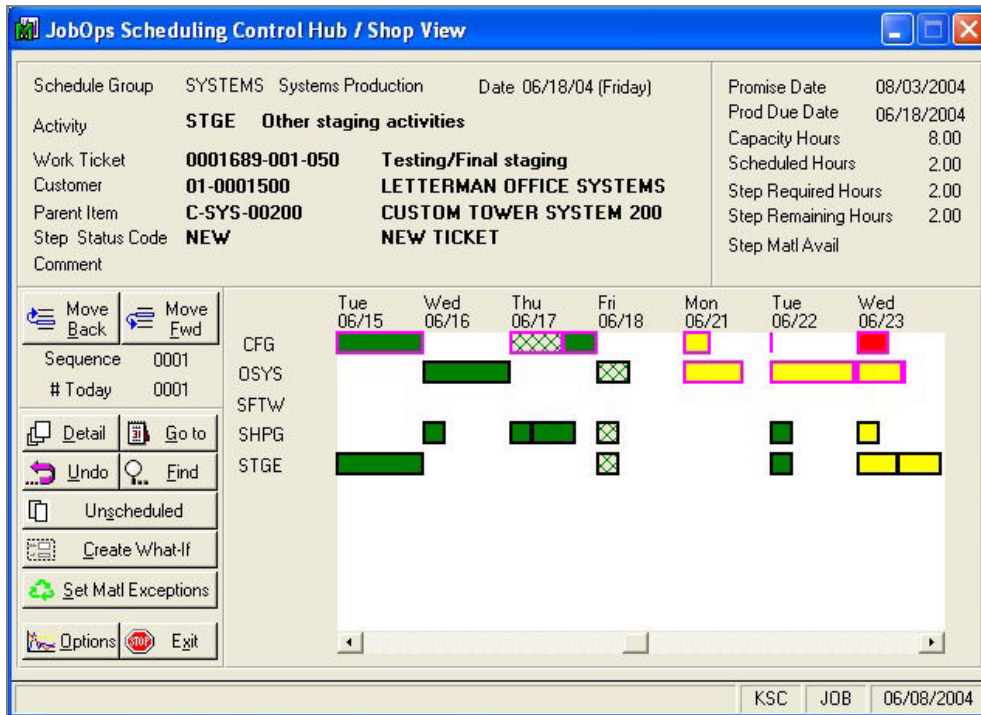


Enhanced Scheduling

Enhanced Scheduling



Using the "What If" mode, you can see how tasks can be reassigned by dragging and dropping the task to a new date or resource. Exception alerts are displayed by various colors to bring your attention to critical jobs.

Enhanced Scheduling Keeps Jobs on Track

Your business needs to provide timely turn-around and reliable delivery dates on its products and services—so scheduling is critical. Without the ability to proactively manage the overall schedule of jobs, delays are inevitable. Your business depends on getting the product to customers without compromise, so you need a more powerful scheduling tool.

Enhanced Scheduling puts you in the driver's seat by delivering flexible management-by-exception tools that show you where jobs are in the schedule. This lets you focus on scheduling and resource utilization with higher precision and better results.

Key Benefits:

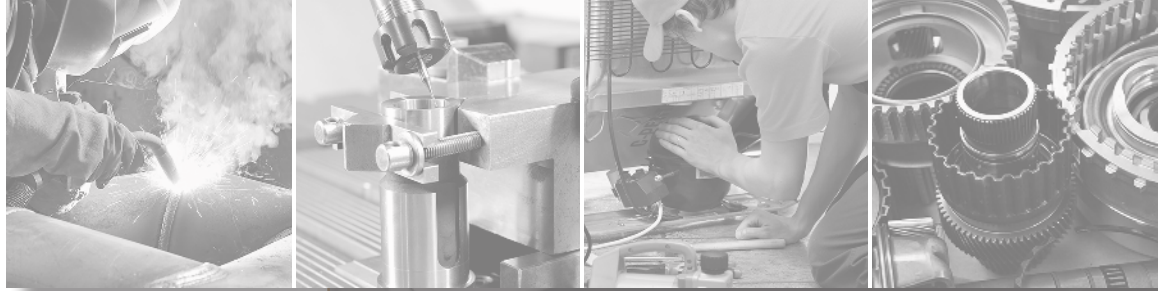
- Reliable *capable-to-promise* dates result from enhanced scheduling tools, enabling you to calculate realistic dates based on current load, your finite and infinite rules and the availability of materials.
- Streamline your scheduling and resource utilization processes, allowing you to deliver jobs on time and on budget.
- Material availability shortages are easily identified on the visual scheduling board allowing you to drill down and see where inventory can be borrowed from a job that can be completed later.
- Powerful scheduling engine helps establish job priority and enables you to change schedules on-the-fly to see how the change may impact the entire schedule.



800.815.8483

www.jobops.com

jobops



Features

Graphical Scheduling Board

Jobs are displayed graphically in a Gantt Chart form. Clicking on any task provides full drill-down details of the job.

Drag 'n Drop Tools

With one mouse click, job assignments can be changed by switching resources or changing the scheduled work dates on a single task or the entire job.

What if? Mode

Proposed changes can be made to view the impact they will have on the rest of the schedule before making final commitment to the change.

Visual Scheduling Alerts

Colors show on-time status and alert you of any resources that are over capacity or material shortages that are required for the job.

Finite and Infinite Scheduling

The Enhanced Scheduling Engine is uniquely able to use infinite scheduling when on-time delivery is critical and finite scheduling when bottlenecks cannot be resolved.

Advanced Scheduling Engine

Analyzes job priority, due dates and resource availability to determine how to load new jobs into your schedule.

Work Center Calendars

Capacity of your resources is entered in work center calendars that can be adjusted on-the-fly if overtime is necessary to meet critical ship dates.

Material Constraints

Material shortages can greatly hinder on-time delivery. JobOps Enhanced Scheduling highlights material constraints and allows drill-downs to see if the materials that are not available in inventory can be borrowed from a job that can be completed later.



JobOps features several add-on products for the JobOps Base Job Management Software. These modules give your business additional functionality for the make, install and service industries.

About JobOps and Synergistic Software Solutions, LLC

JobOps is a suite of integrated modules for the award-winning Sage 100 system and is published by Synergistic Software Solutions, LLC. More than 900 customers, representing over 10,000 end-users have selected JobOps to power their custom job management operations and workflow.

Synergistic Software Solutions, LLC is the publisher of JobOps Job Management Software for small and mid-sized businesses. Synergistic Software Solutions, LLC is based in Minneapolis, Minnesota and has an extensive network of JobOps Solution Providers throughout the U.S. to better service our customer base.



For more information please go to:
www.jobops.com
 or call (800) 815-8483

JobOps Solution Provider Contact Information