

Scanco

innovation
service
experience

Wisconsin Sage 100 User Group 2018

sage 100

sage 100c

Sage Mobility for Manufacturing



Darin Steward – Vice President of Professional Services
Kristen Baumgartner – Scanco Software Specialist

About Us

WAREHOUSE MANAGEMENT & MANUFACTURING AUTOMATION SOLUTIONS

Since 1989, Scanco has been a leading provider of supply chain automation software and services. Since our inception, we have focused on innovative warehouse management solutions with a unique technology-driven approach. Our solutions deliver unequaled efficiency and visibility for distribution and manufacturing companies around the globe.

From basic barcoding to the most complex distribution and manufacturing operations- Scanco software is positioned to grow with our customers ever changing business needs. We are focused on providing top-tier, fully integrated automation solutions built specifically for your ERP solution. Today, thousands of world-class distribution and manufacturing companies have automated their facilities with cutting-edge Scanco technology.



Agenda

- Am I A Candidate For Manufacturing Automation?
- Where Do I Start?
- Improving Efficiencies
- Tracking for WO & Sage 100c MFG/JobOps
- Questions & Answers
- How to Get More Information



Am I A Candidate For Manufacturing Automation?

Can you:

- Locate a specific job on your shop floor?
- See what your employees are working on?
- See where your job is in the production process?
- Tell when a job or entire line is behind or ahead of schedule?
- Easily determine the actual cost per item?
- Read the handwriting?



Improving Efficiencies – Stop the Manual Entry

Real Time Labor Tracking

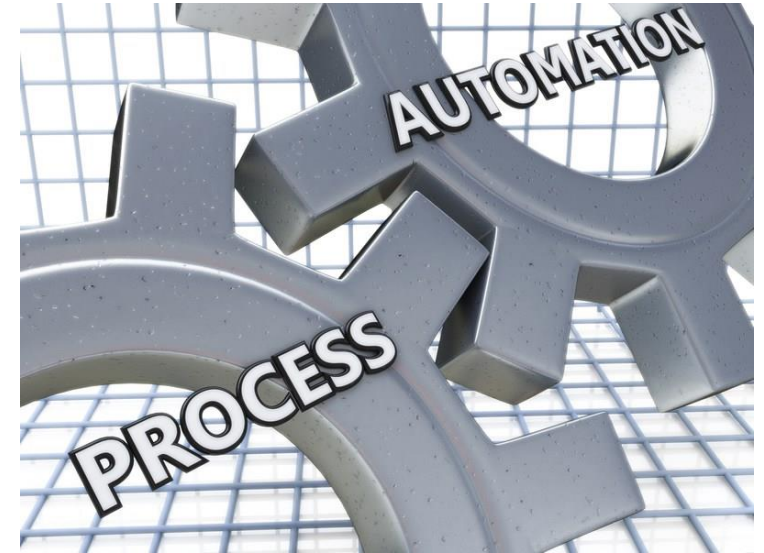
- Productive Labor
- Non-Productive Labor
- Labor vs. Payroll Comparisons

Real Time Material Tracking

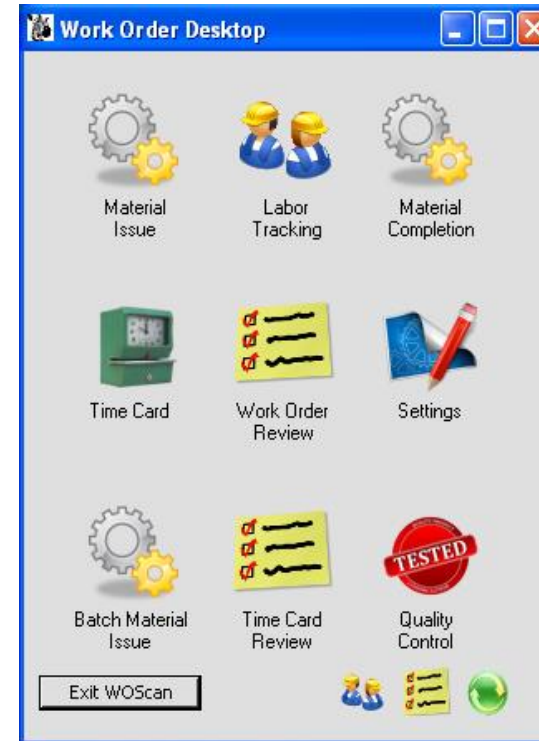
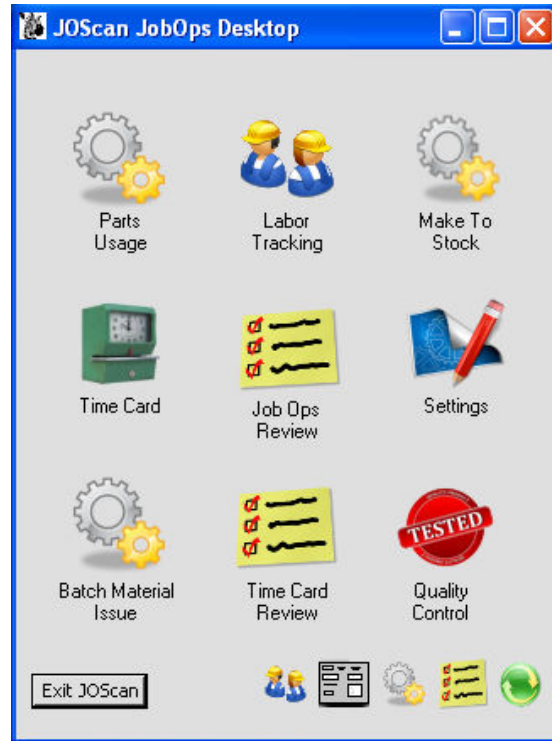
- Eliminate Backflushing and Auto Issuing
- Track Actuals – Lot and Serial
- Know Real Time Inventory and WIP levels

Real Time Completions – **Know** When Finished Goods Are Available

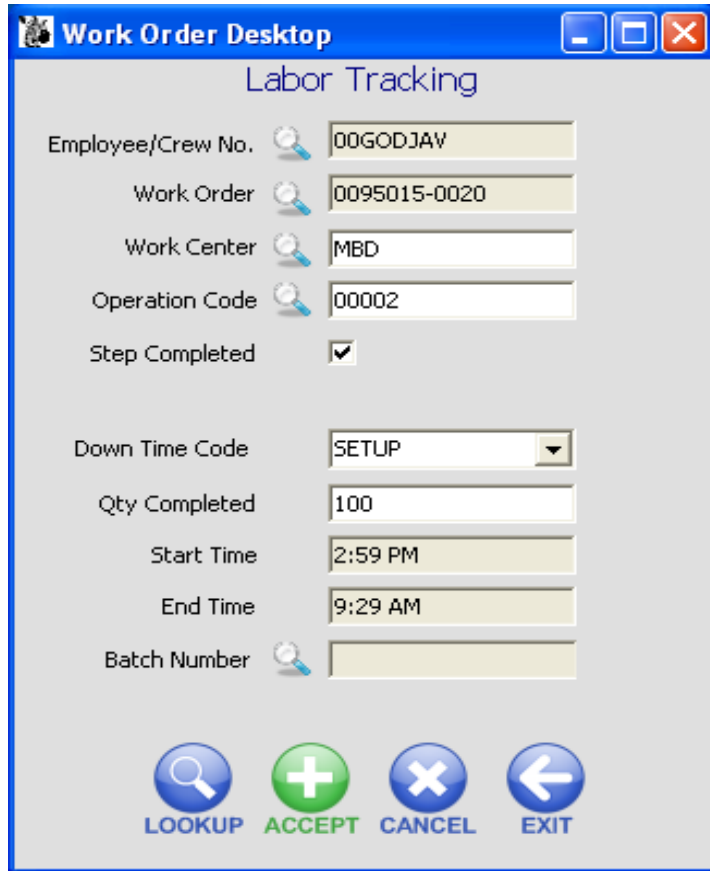
Dashboards – Real Time Job Status



Data Tracking for Sage Work Order and Sage 100cloud Manufacturing/JobOps



Labor Tracking



The screenshot shows a software window titled "Work Order Desktop" with a sub-header "Labor Tracking". The interface contains several input fields and a checkbox:

- Employee/Crew No.: 00GODJAV
- Work Order: 0095015-0020
- Work Center: MBD
- Operation Code: 00002
- Step Completed:
- Down Time Code: SETUP (dropdown menu)
- Qty Completed: 100
- Start Time: 2:59 PM
- End Time: 9:29 AM
- Batch Number: (empty field)

At the bottom of the window, there are four circular buttons: "LOOKUP" (magnifying glass icon), "ACCEPT" (green plus icon), "CANCEL" (blue X icon), and "EXIT" (blue left arrow icon).

- Employee/Crew Tracking
- Work Order/Work Ticket Steps
- Collect Actual Start/Stop Times
- Updates Sage Modules For You

Material/Completion Tracking

Work Order Desktop

Material Issue

Work Order

Item Number

MULTI FUNCT, MULT-DRIV CONTRLR

Warehouse

Bin Location

Issue Qty





Unit Of Measure

Qty On Hand 60.0000

Required Qty 20.0000

Issued Qty 35.0000

Remaining Qty -15.0000

Work Order Desktop

Material Completion

Work Order

Complete To

Item Number

TURBO DESKTOP COMPUTER SYSTEM

Warehouse

Bin Location

Quantity





Unit Of Measure

Number of Labels

Close Work Order

Weight

Pallet

- Collect Actual Lot/Serials
- See Quantities Required & On Hand
- Assign Finished Good Lots
- See Inventory Levels in Real Time
- Full Multi-Bin Integration

Dashboards – Know Your Floor Real Time

View Time Tracked

EmpCrewNumber: [dropdown] Begins With: [dropdown] Filter

Overlapping Time (Red)
 Step Complete Missing (Green)
 Time Gap (Orange)
 Track Out Time Missing (Light Blue)
 Time In Job (Yellow)

Filter By Device

Emp Crew Number	Work Order	Step Number	Work Center	Operation Code	Step Complete	Qty Completed	Start Time	End Time
AAMES, LESLIE	0095015	0000	CAB	00001	Y	100.000000	4/3/2013 2:59 PM	4/4/2013 5:00
BROWN, WAYNE	0095015	0010	MBD	00001			4/3/2013 2:59 PM	4/4/2013 5:00
GODDY, JAVIER	0095015	0020	MBD	00002			4/4/2013 2:59 PM	
GOMEZ, ELIZABETH	0095015	0030	PWR	00001			4/4/2013 2:59 PM	4/5/2013 9:2
WILSON, SHARON	0095016	0030	PWR	00001			4/4/2013 3:00 PM	
WILSON, SHARON	0095016	0020	MBD	00002			4/4/2013 3:00 PM	
WILSON, SHARON	0095016	0010	MBD	00001			4/4/2013 3:00 PM	
WILSON, SHARON	0095016	0000	CAB	00001			4/4/2013 3:00 PM	

Total Records: 8

File

Labor Tracking | Material Issue | Material Completion | Material Batch

Check All

Record Count: 4 Filter [dropdown] [dropdown] Apply Filter

Work Order	Item Number	Warehouse Code	Location Code	Completed Quantity	UOM	Scrap Code	Complete To	Step Number	Is Ve
0095015	DSKTP-00200	000		100.000	EACH		Inventory		
0095015	DSKTP-00200	000		120.000	EACH		Inventory		
0095015	DSKTP-00200	000		450.000	EACH		Inventory		
0095015	DSKTP-00200	000		12.000	EACH	DAMAGED	Scrap	0000	

Process Tab | Process All | Reload Data | Save Changes

File

Shop Floor Monitor

Record Count: 5 Filter

Employee Number	Employee Name	Clock In	Work Center	Step Number	WorkOrder	Item Number	Qty Planned	Step Qty Completed	Step Qty Due
00GODJAV	GODDY JAVIER	4/4/2013 2:59 PM	MBD	0020	0095015	DSKTP-00200 ...	20.0000		
00WILSHA	WILSON SHARON	4/4/2013 3:00 PM	PWR	0030	0095016	DSKTP-00200 ...	2.0000		
00WILSHA	WILSON SHARON	4/4/2013 3:00 PM	MBD	0020	0095016	DSKTP-00200 ...	2.0000		
00WILSHA	WILSON SHARON	4/4/2013 3:00 PM	MBD	0010	0095016	DSKTP-00200 ...	2.0000		
00WILSHA	WILSON SHARON	4/4/2013 3:00 PM	CAB	0000	0095016	DSKTP-00200 ...	2.0000		

Reload Data



Questions & Answers



THANK YOU FOR LISTENING!

**Please Contact Darin Steward or Kristen
Baumgartner for Additional Information**

(918) 633-1309

darin@scanco.com

(815) 679-9003

kristen@scanco.com