

# Sage 100 ERP

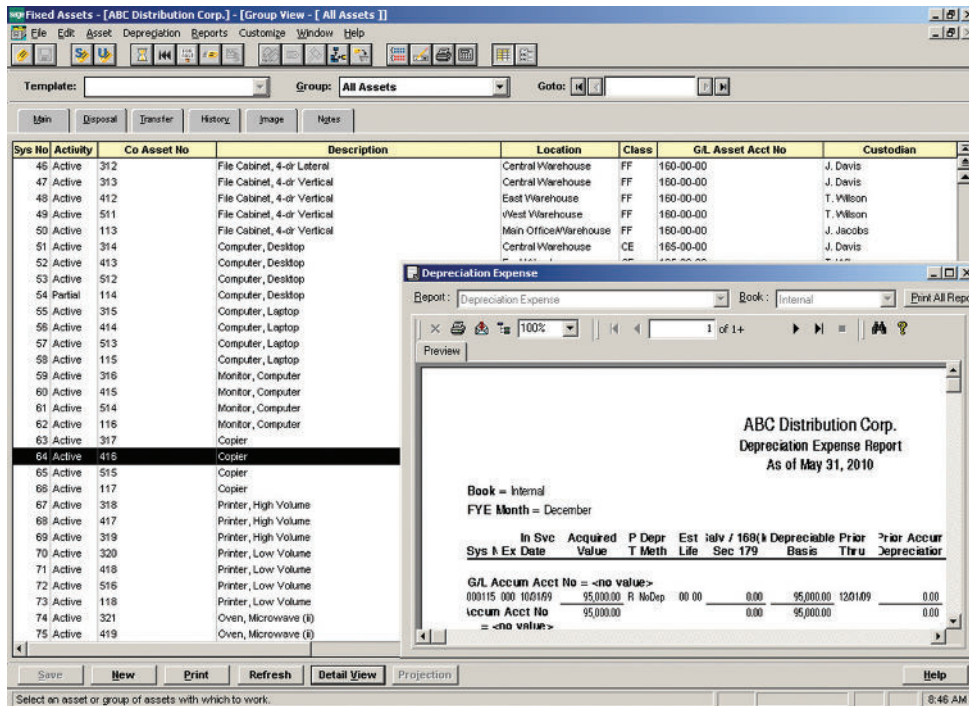


## Fixed Assets\*

Manage your fixed assets effectively from acquisition to disposal, account for their value, and reap tax benefits whether you have a fixed asset inventory of 10 or 1,500. The Sage 100 ERP (formerly Sage ERP MAS 90 and 200) system offers Fixed Assets—designed to meet the needs of small and mid-sized businesses, providing you with fast, dependable, customizable fixed asset management to maximize your bottom line. Fixed Assets combines acknowledged depreciation expertise and user-friendliness with the added power, data security, and functionality that your business situation demands.

Run projection depreciation calculations, create IRS-ready depreciation tax forms, and move fixed assets between business units with ease. Fixed Assets provides you with the additional ability to execute partial and whole transfers and disposals, conduct bulk disposals with automatic gain/loss calculations, and track transfer activity with as little as a single keystroke.

You also get extra security features at the system level, company level, and user-defined menu levels, such as complete audit histories on all changes made to the fixed asset system. In addition, SmartLists provide user-defined values for each asset descriptor, ensuring a high level of consistency throughout the asset system. Easy to install, customize, and use, the Fixed Assets module is a comprehensive solution within your Sage 100 ERP system.



## COMPREHENSIVE FEATURES

Complete fixed asset accounting and depreciation for better business management and compliance

Over 300,000 IRS and GAAP rules built in

Seven books—all visible on one screen:

- Internal
- Tax
- ACE
- AMT
- State
- Two user-definable books

Automatic creation of AMT and ACE schedules and over 50 methods of depreciation, including:

- MACRS 150% and 200% (formulas and tables)
- ACRS
- Straight Line
- Modified Straight Line (formulas and tables)
- Declining Balance
- Sum-of-the-Years-Digits
- Customized depreciation methods

Easy to install, customize, and use, the Fixed Assets module is a comprehensive fixed asset management solution.

\*This module is compatible with Sage 100 Standard and Advanced ERP.



## Edition

Compatible with Sage 100 Standard and Advanced ERP

## Features

<b>Transfers and Disposals</b>	Execute partial and whole asset transfers and disposals individually to user-defined depreciation schedules. For bulk disposals, the system automatically calculates gain/loss on individual assets.
<b>Group Manager</b>	Group Manager lets you define groups of assets as you go. Definitions can be based on any characteristic, including type, location, custodian, and acquisition date.
<b>Asset Templates</b>	Templates provide you with an easy way to create a new asset. When a new asset is purchased, the selected template automatically fills out the asset information.
<b>Asset Views</b>	See details of a single asset from all seven books on a single screen using the Asset Detail View. You can also work with and view multiple templates simultaneously through Asset Group View.
<b>Asset Images</b>	Store asset photos, purchase orders, maintenance agreements, warranties, invoices, and other documentation in the asset file and view them on screen at any time. These images provide you with a complete and readily accessible record of all asset data.
<b>Asset Navigation and History</b>	In addition to the powerful query capabilities at your fingertips, Fixed Assets provides you with the means to instantly switch between Main and Disposal functions, a complete audit trail of the major events in an asset's life, and the facility for you to attach notes and record important details.
<b>Reporting and Tax Forms</b>	More than 30 standard reports are available, each allowing user-defined sort and range criteria on all fields. Plus, print ready-to-file IRS tax forms or worksheets, including IRS forms 4562 and 4794.
<b>Online Help</b>	Instant, context-sensitive online Help is always available to you. Also, customizable Help for online corporate guidelines can be easily added.
<b>Extra Security</b>	Ensure complete security at user, user-defined menu, system, and company levels to protect important or proprietary data from unauthorized access or manipulation.

## Benefits

<b>Easy to Use</b>	Fixed Assets utilizes an intuitive interface that's easy to implement, learn, and use. Asset templates ensure that you can create new assets quickly and accurately.
<b>Reduce Errors and Improve Efficiency</b>	Choose from more than 50 methods of depreciation to automatically create AMT and ACE schedules or create customized methods in each company.
<b>Compliance</b>	Simplify Sarbanes-Oxley compliance for your business with custom-tailored security features and an advanced audit trail that red-flags potential compliance issues.
<b>Built-In Security</b>	Password security at the user level also includes fully controlled access to user-definable SmartLists for fewer data entry errors.

## About Sage

Sage is a leading global supplier of business management software and services for small and mid-sized businesses. The Sage Group plc, formed in 1981, was floated on the London Stock Exchange in 1989 and now employs more than 12,300 people and supports more than 6 million customers worldwide. For more information about Sage in North America, please visit the company website at [www.SageNorthAmerica.com](http://www.SageNorthAmerica.com). Follow Sage North America on Facebook, <http://www.facebook.com/SageNorthAmerica>, and Twitter, <http://twitter.com/#!/sagenamerica>.